

Direct entry to server

Communication

```
11:05:27 Connecting,TCPIP=127.0.0.1
11:05:27 Connecting,Port=2010
11:05:27 SendStringOnEndOfPartProgram
11:05:27 AlwaysInTheForeground=False
11:05:27 UseProgrammMapping=True
11:05:27 PARK=False
11:05:27 KeepCMMFreeAfterRunAfter=5
11:05:27 CommunicationFilesOlderThan=2
11:05:27 WriteCommunicationFile=True
11:05:27 CreatePartProgramCopyAfterMeasurement
11:05:27 ProgrammkopiePfadGesetzt=True
11:05:27 ProgrammkopiePfad=C:\Test\Palettenm
11:05:27 AppSettings=0
11:05:27 AppSettings=0
11:05:27 AppSettings=2
11:05:27 AppSettings=0
11:05:28 Connection trial with GetObject
To PC-DMIS=CONNECTED
pallet Manager=ONLINE
```



HEXAGON

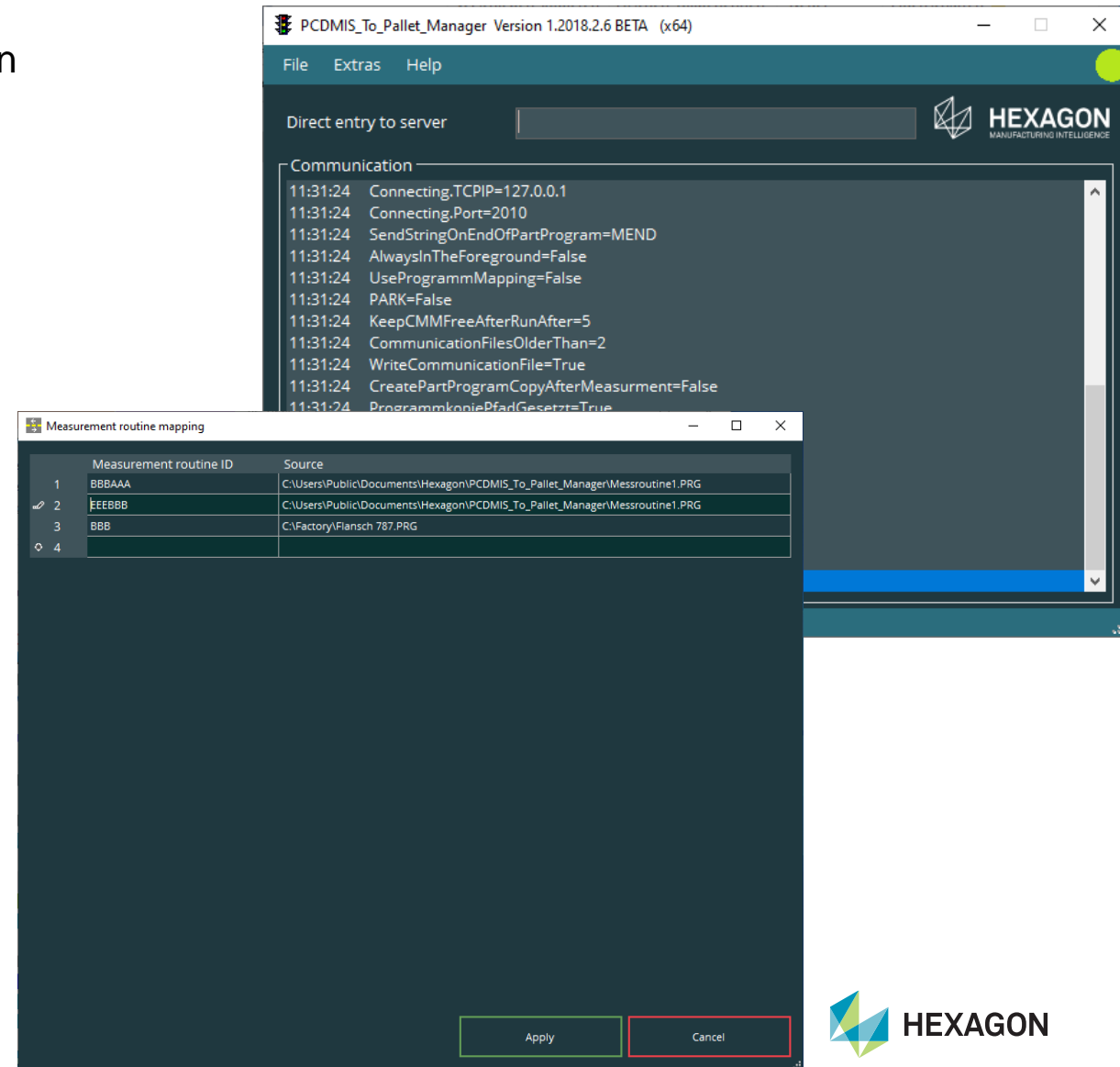
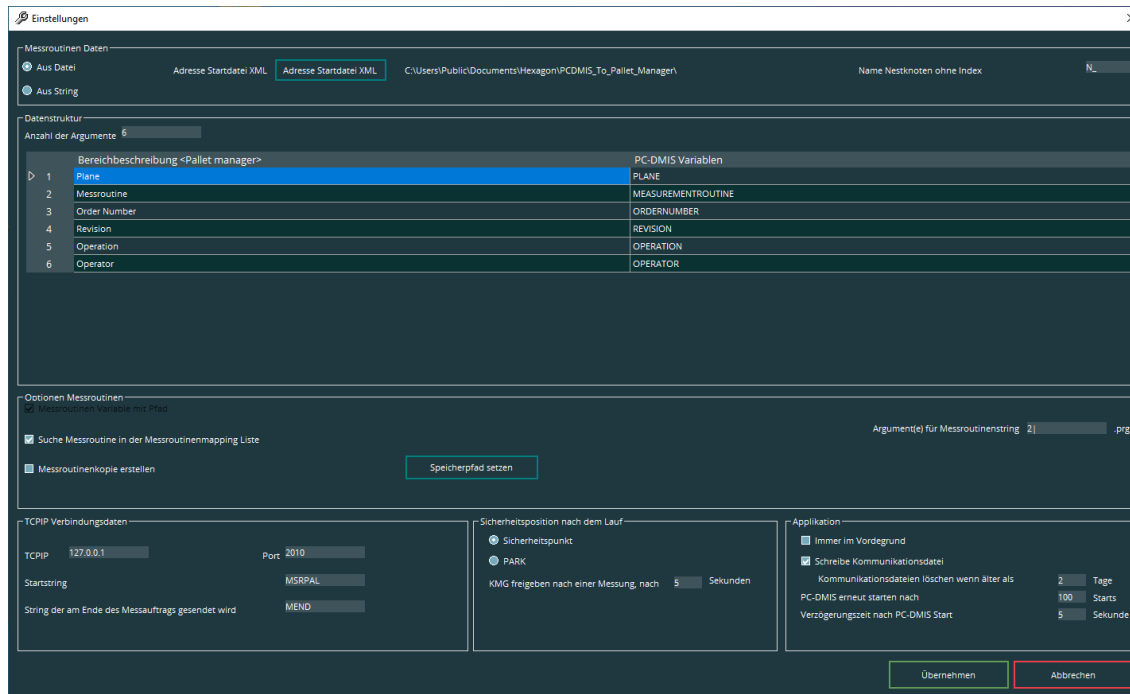
PC-DMIS To Pallet Manager

Product presentation

22025-01-13 Customer Solutions Wetzlar

Automation: FST Pallet Manager for PC-DMIS customers

- This software enables the FST Pallet Manager to be used in conjunction with PC-DMIS.
- Available in English and German
- Settings allow the software to be adapted to the customer process



Have we piqued your interest?

Simply download the software from our server and apply for a non-binding demo license.

https://downloads.ms.hexagonmi.com/PC-DMIS_Solution_Modules/PC-DMIS_To_Pallet_Manager/